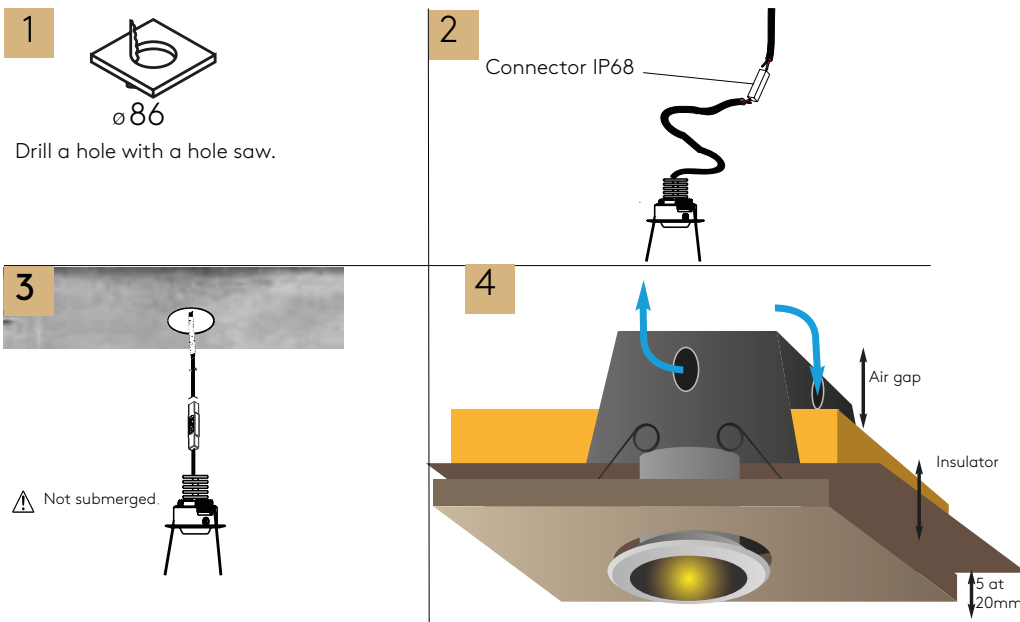
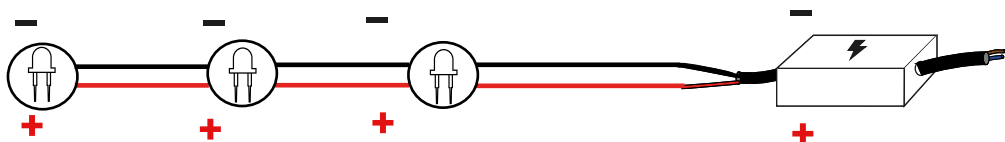


INSTALLATION SHEMATICS



Parallel wiring 12-24VDC



Lumière à la Française depuis 2008

www.orsteel-light.com
+33 (0)4 93 85 98 30



All data are given for information purposes only. They do not constitute a contractual commitment on our part and are subject to change at any time.



PANTAI 24VDC



The superb Pantai recessed ceiling light is to flush mount. Its customizable projecting flange mean that it can provide occasional architectural and landscape lighting. It offers watertight IP68 lighting for all your decorative indoor or outdoor lighting.

Electrical features	
POWER	7x2.5W
SUPPLY	24VDC
POWER SUPPLY	Not included
WIRING	Parallel

Mechanical characteristics	
SIZE	Ø100x103 mm
WEIGHT	0.44kg
MATERIAL	Solid aluminium

Characteristics lighting techniques	
AVERAGE LIFE OF THE LED	60 000 hours Certificated L90 B10
COLOUR EMISSION	2700K - 3000K - 4000K - 6000K RED - GREEN BLUE - AMBER
BEAM	10°-25°-40°-115°
INITIAL OUTFLOW	1757lm at 3000k

General characteristics	
OPERATING TEMPERATURE	- 20°C ~+ 60°
PROTECTION RAITING	IP68
RESISTANCE INDEX	IK10
ENERGY CLASS	A / A+ / A++
APPLICANCE CLASS	CLASS III
WALKOVER FIXTURE	NO
DRIVE-OVER FIXTURE	NO
POWER SUPPLY CABLES	Supply wire 2x0,35 mm2 in IP68
PHOTOBIOLOGICAL SAFETY	Risk group I

INSTALLATION GUIDE

1. Use

Spotlight to flush mount in a suspended ceiling. Interior architectural lighting. IP68 class watertight so it can be fitted in a damp atmosphere or a low-energy building. Only an IP68 connection to the electricity network ensures the IP68 degree of the product Manufacturing/special applications available on request.

2. Technical data/Assembly

Round trim in different finishes, with 7x2,5W LED cold white (6000 K), neutral white (4000 K), warm white (3000 K), Red, Green, Blue, Amber, fixed by two steel springs with rubber protection. Delivered with a 2x0,35mm² 30cm long cable.

3. Installation/assembly

Please comply with the applicable national safety requirements We disclaim all responsibility for non-compliant use or assembly Similarly, we reject any responsibility for any modifications you may make to the light fittings.

For their use, constant current spotlights must always be connected in series to the corresponding DC power supply (see power packs) (12-24VDC). Do not disassemble the projector casing, because the cables and the plate are sealed Install the spotlight in a BA13 type or metal ceiling. We cannot supply universal installation instructions because ground conditions and the location will vary for each project. The pictograms show examples of typical installations.

When installing, it is advisable not to put rock wool around the product to ensure it is correctly ventilated. Use only the factory-connected cables. Please indicate the required cable length when ordering. In the event of mechanical stress, the cable must be installed in a protective conduit. The connection of the silicone cable to the supply must be carried out in a dry environment and, in the event of a direct connection in the ground, only connection units compatible with a joint sealing compound should be used. Connect the various conductors to power supplies in accordance with instructions. The maximum number of lights that can be connected is indicated in the power pack manual

4. Connecting to the power packs/connection matrix

Constant current spotlights must only be connected in parallel. If applicable, proceed with connection in parallel in separate load distribution units, the outside of which must also be protected against humidity using a sealing compound.

5. General Maintenance Instructions

Do not use detergents which are harmful to metals when cleaning the spotlight. The use of hydrochloric acid-based detergents on and around any parts of a stainless steel light fitting is totally forbidden.

Regularly clean the spotlight and its mounting box to avoid any rust deposit

6. Warranty conditions

The following time limits and provisions of the warranty shall apply from the date of delivery: - 24 months for Orsteel spotlights. The warranty covers defects in materials, manufacturing defects and any treatment which is proven to be attributable to the manufacturer. Any damage resulting from the non-compliance with this user leaflet or any non-compliant repair is excluded from the warranty. We disclaim any guarantee where the installation has not been carried out according to the instructions or where unsuitable bulbs or connection cables have been used. We reserve the right to make any modification corresponding to technical advancement.

7. Important Notice

(The warranty becomes void in the event of non-compliance with the following points)

The absence of damage during transport must be verified before installation.

Any assembling and installation, as well as any electrical work, must be carried out by qualified personnel.

To avoid any rust deposits, only stainless steel tools should be used.

The cable length for lamps must be chosen to avoid extending it in water or in a damp environment. Any subsequent claim for this reason will not be accepted.

A mounting distance of 10 cm between each device is strongly recommended to avoid mutual heating.

Equipment must be connected without current, otherwise surges in the power supply could damage the LEDs. There must be no primary voltage when changing LEDs.

When connecting the lamps, please ensure that polarity matches! A polarity error may damage the LED module.

The customer is advised to install protection against any over voltage compliant with standards DIN VDE 0100-443, DIN VDE 0100-534 and En 62305.

Please observe the measures against electrostatic discharge during all work on the spotlights, equipment and LEDs.