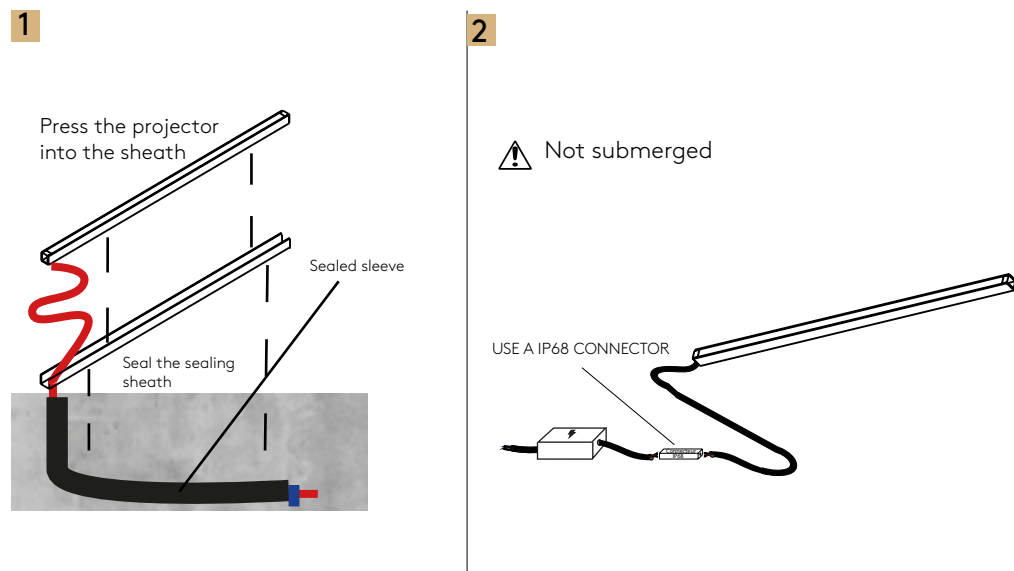
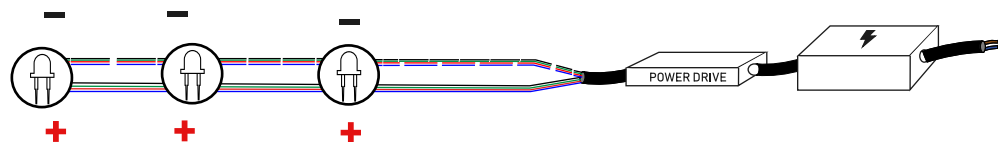


INSTALLATION SHEMATICS



Parallel wiring RGBW



Lumière à la Française depuis 2008



www.orsteel-light.com
+33 (0)4 93 85 98 30



All data are given for information purposes only. They do not constitute a contractual commitment on our part and are subject to change at any time.



LINE RGBW DYNAMIC WHITE 24VDC



LED rail light for driveways, stairs, movement areas. It consists of a length of structure with an integrated connection lead to connect to other rail spotlights or directly to the power source. Different sizes can be produced on request to create a continuous line. One single 120° angle is available with watertight IP69 opal or clear diffusion. It is cast in one piece, so it is the ideal floodlight for all your contemporary architectural lighting projects.

Electrical features	
POWER	19W/mètre
SUPPLY	24VDC
POWER SUPPLY	Not included
WIRING	Parallel

Mechanical characteristics	
SIZE	(1/2/3/4/5m)x15x15mm
WEIGHT	0.6kg for 1m
MATERIAL	Aluminium anodised

Characteristics lighting techniques	
AVERAGE LIFE OF THE LED	60 000 hours Certificated L90 B10
COLOUR EMISSION	RGBW : Red - Green - Blue - 4000°K Dynamic white : 2700°K - 3000°K 4000°K - 6000°K
BEAM	115°
INITIAL OUTFLOW	358lm at 4000k

General characteristics	
OPERATING TEMPERATURE	- 20°c ~+ 60°
PROTECTION RAITING	IP69
RESISTANCE INDEX	IK10
ENERGY CLASS	A / A+ / A++
APPLIANCE CLASS	CLASS III
WALKOVER FIXTURE	YES
DRIVE-OVER FIXTURE	YES
POWER SUPPLY CABLES	Supply wire 5x0.22 mm2 in IP68
PHOTOBIOLOGICAL SAFETY	Risk group I

INSTALLATION GUIDE

1. Use

Linear projector fixed to lateral brackets or swivel mount bracket. For interior and exterior architectural lighting, used for illuminating large flat surfaces or to provide long linear lighting zones. Its small dimension cables mean it can be discreetly placed at the foot of walls or in ledges. Only an IP69 connection to the electricity network ensures the IP69 degree of the product

2. Technical data/Assembly

Projector with 19W/m LED RGBW/W. Delivered with 1 m of 5x0,22mm² submersible cable.

3. Installation/assembly

Please comply with the applicable national safety requirements We disclaim all responsibility for non-compliant use or assembly Similarly, we reject any responsibility for any modifications you may make to the light fittings.

24VDC projectors must always be connected in parallel to the corresponding DC power supply. Do not disassemble the projector casing, because the cables and the plate are sealed. The spotlight can be installed in concrete, paving blocks, plates, wood. We cannot supply universal installation instructions because ground conditions and the location will vary for each project. The pictograms show examples of typical installations.

When mounting on a reinforced bracket, you must remove the screws; remove the projector from its support and direct it toward the object to be lit. Then fix to the bracket using the A4 stainless steel screws provided.

Use only the factory-connected cables. Please indicate the required cable length when ordering. In the event of mechanical stress, the cable must be installed in a protective conduit. The silicone cable must only be connected to the power supply in a dry environment and, in the event of a direct connection in the ground, only connection units compatible with a joint sealing compound should be used. Connect the various conductors to power supplies in accordance with instructions.

4. Connection to power supply

24VDC spotlights must only be connected in parallel.

5. General Maintenance Instructions

Do not use detergents which are harmful to metals when cleaning the spotlight. The use of hydrochloric acid-based detergents on and around any parts of a stainless steel light fitting is totally forbidden.

Regularly clean the spotlight and its mounting box to avoid any rust deposit

Caution: Do not use a high pressure cleaner. Caution: Protect the spotlights from frost; where appropriate, dismantle or ensure special protection. Any lost screws must be replaced by stainless steel V4A screws. According to conditions of use (power, environmental circumstances), it is recommended to change the seals (on the glass, screw fittings and O-rings) and the cable every 5 to 8 years.

6. Warranty conditions

The following time limits and provisions of the warranty shall apply from the date of delivery: - 24 months for Orsteel spotlights. The warranty covers defects in materials, manufacturing defects and any treatment which is proven to be attributable to the manufacturer. Any damage resulting from the non-compliance with this user leaflet or any non-compliant repair is excluded from the warranty. We disclaim any guarantee where the installation has not been carried out according to the instructions or where unsuitable bulbs or connection cables have been used. We reserve the right to make any modification corresponding to technical advancement.

7. Important Notice

(The warranty becomes void in the event of non-compliance with the following points)

The absence of damage during transport must be verified before installation.

Any assembling and installation, as well as any electrical work, must be carried out by qualified personnel.

To avoid any rust deposits, only stainless steel tools should be used.

The cable length for lamps must be chosen to avoid extending it in water or in a damp environment. Any subsequent claim for this reason will not be accepted.

A mounting distance of 10 cm between each device is strongly recommended to avoid mutual heating.

Equipment must be connected without current, otherwise surges in the power supply could damage the LEDs. There must be no primary voltage when changing LEDs.

When connecting the lamps, please ensure that polarity matches! A polarity error may damage the LED module.

The customer is advised to install protection against any over voltage compliant with standards DIN VDE 0100-443, DIN VDE 0100-534 and En 62305.